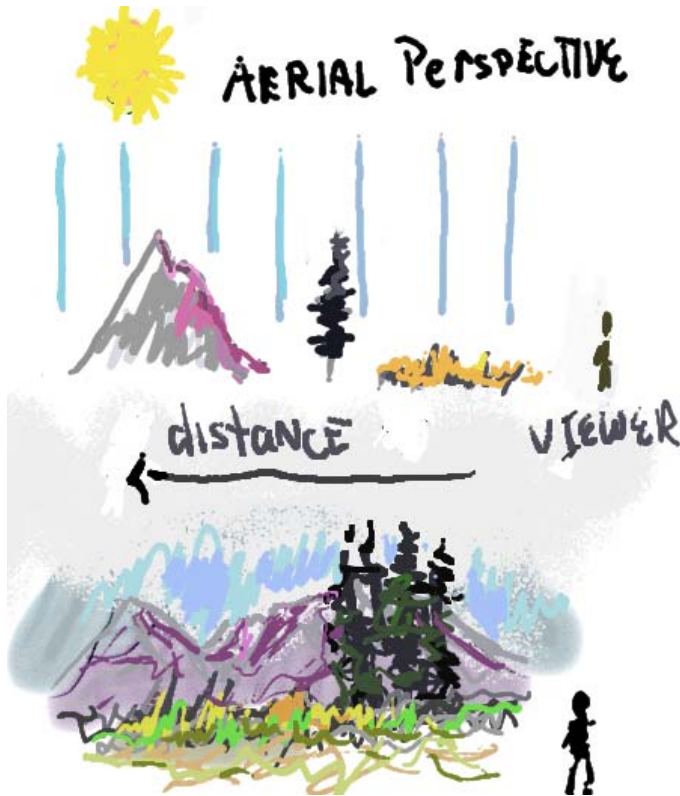


## Plane Chalk Talk



We see distance through the blue atmosphere. Everything we see becomes lighter and bluer.

The picture can be divided into planes. The sky plane, mountain plane, vertical plane, and ground plane.

So...

- Sky plane is light and cool
- Mountain plane is mid-tone and cool or purple
- The vertical (tree) plane is dark
- The ground plane is light and warm



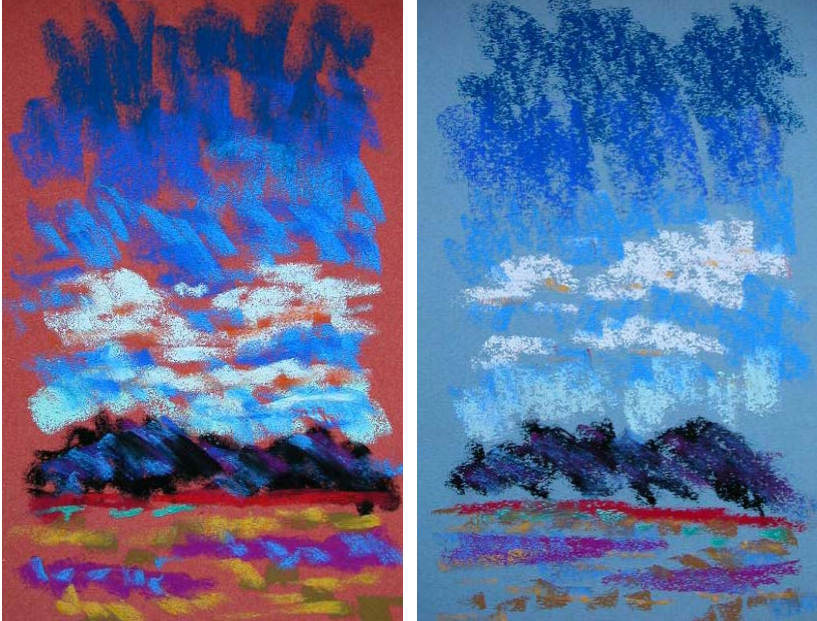
So...

- Sky plane is light and cool
- Mountain plane is mid-tone and cool or purple
- The vertical (tree) plane is dark
- The ground plane is light and warm

## Exercise 9: A Cool Sky

Demonstration first, then we'll all practice.....

Sky with Salmon La Carte and gray Canson paper



- sky with vertical strokes
- clouds blended in
- mountains
- foreground horizontal.
- the dark red is added to give some color zip to the study. All the cool color needs some warmth for balance

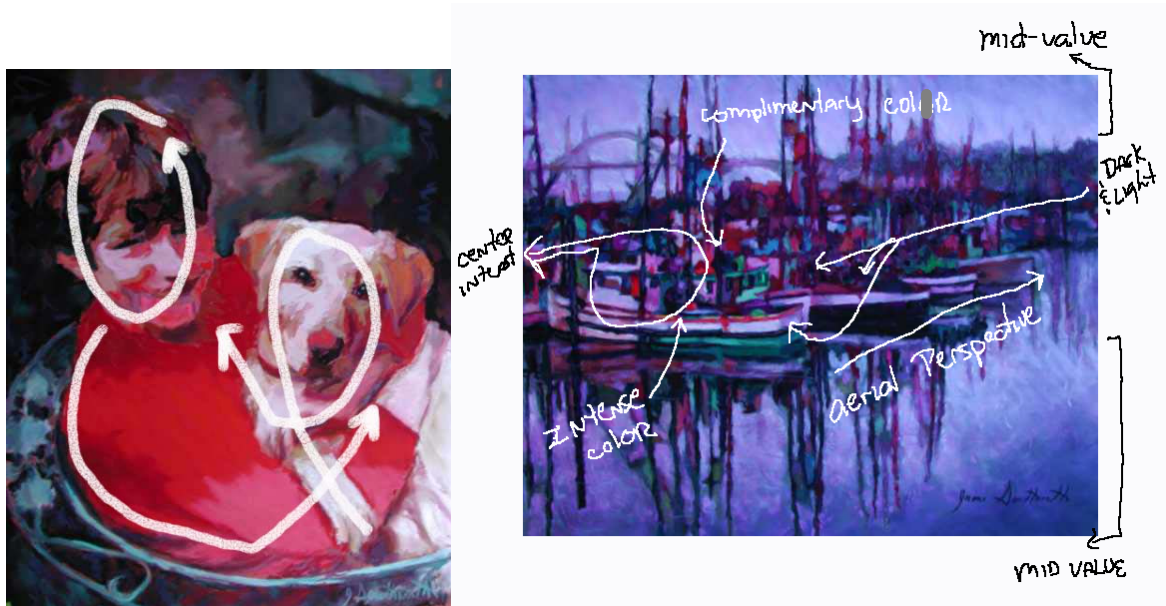
Now blend with finger in the direction of the strokes. Add a little violet to base of clouds and we are all done!

## Composition Chalk Talk

Before I start a painting, I develop a good working sketch of the values of the painting. If I'm outdoor painting, I use a pencil and paper to mark light, dark and middle values. I use this value sketch to help hold the composition together.



When I'm using a digital photo, I compose using Adobe Photoshop 7. My goal at this stage is to simplify shapes, saturate colors, and emphasize the center of interest. I'll use this as a guide for the first half of the painting and then work somewhat intuitively after that.



The center of interest or focal point should have:

- The most detail,
- The most contrast,
- The most saturated colors and
- Other elements of the painting should support the center of interest.

## Comparing Pastels brands

Take a break from the studies and explore the tables up front. Make a few practice strokes with each brand.

Listed in order of softness

- **SCHMINCKE**

Soft! Good for knockout highlights



- **SENNELIER**

Our brand



- **UNISON**

My workhorse I use after block in of shapes



- **DIANE TOWNSEND**

Excellent metallic and dark colors



- **MOUNT VISION**

Good value and colors



- **REMBRANDT**

I use to do initial block in of shapes

- **WINSOR & NEWTON**



- **NUPASTEL**

Good for fine detail, very hard

Rochester Art Supply  
150 West Main Street  
Rochester, New York 14614 USA  
Phone: (800) 836-8940  
FAX: (716) 546-5028  
Website:  
<http://www.fineartstore.com/>

Dakota Art  
P.O. Box 2258  
Mt. Vernon, WA.  
98273-9998  
Phone: 1-888-345-0067  
Website:  
<http://www.dakotapastels.com>